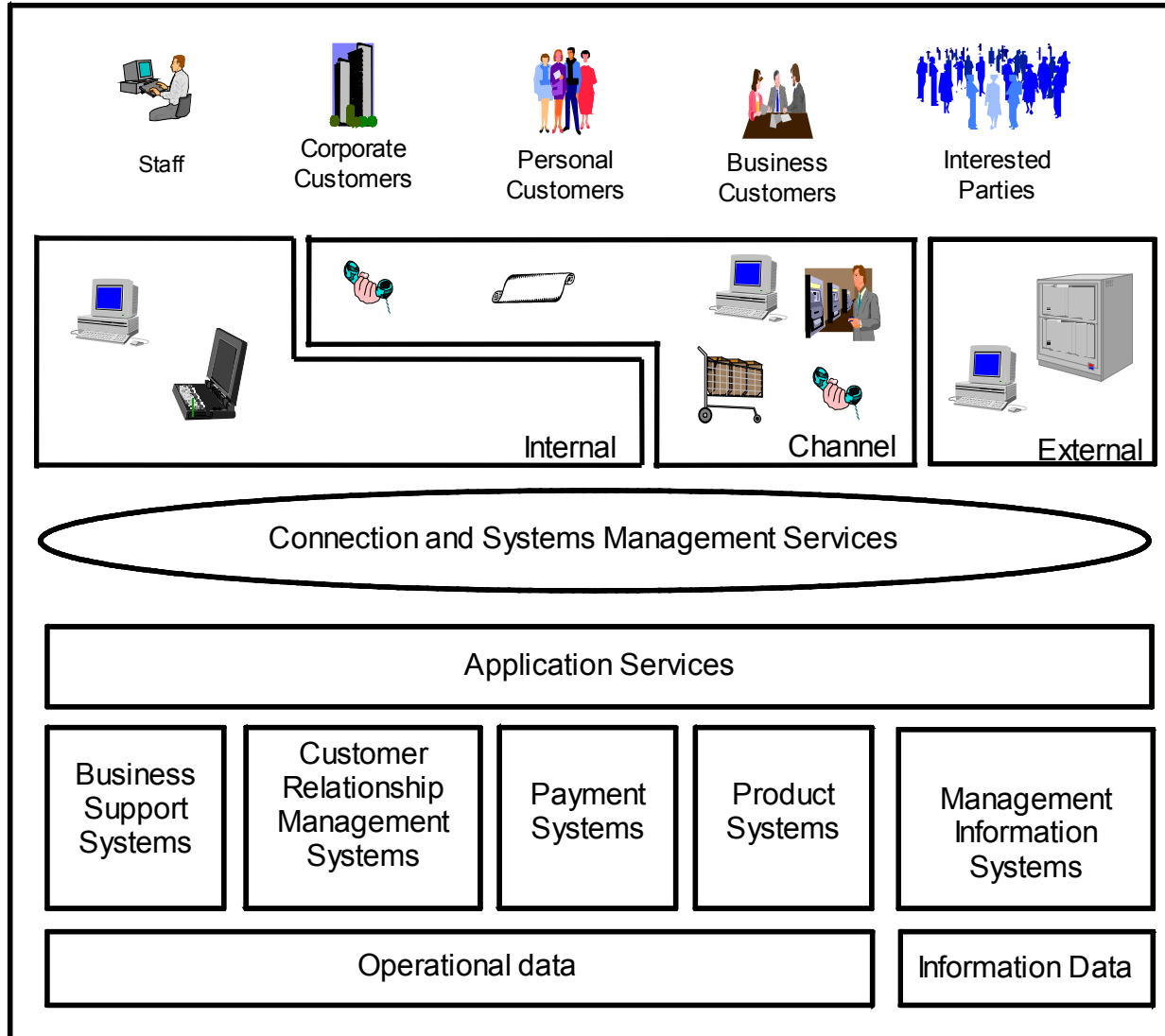


SOA в реаліях України, досвід, перспективи



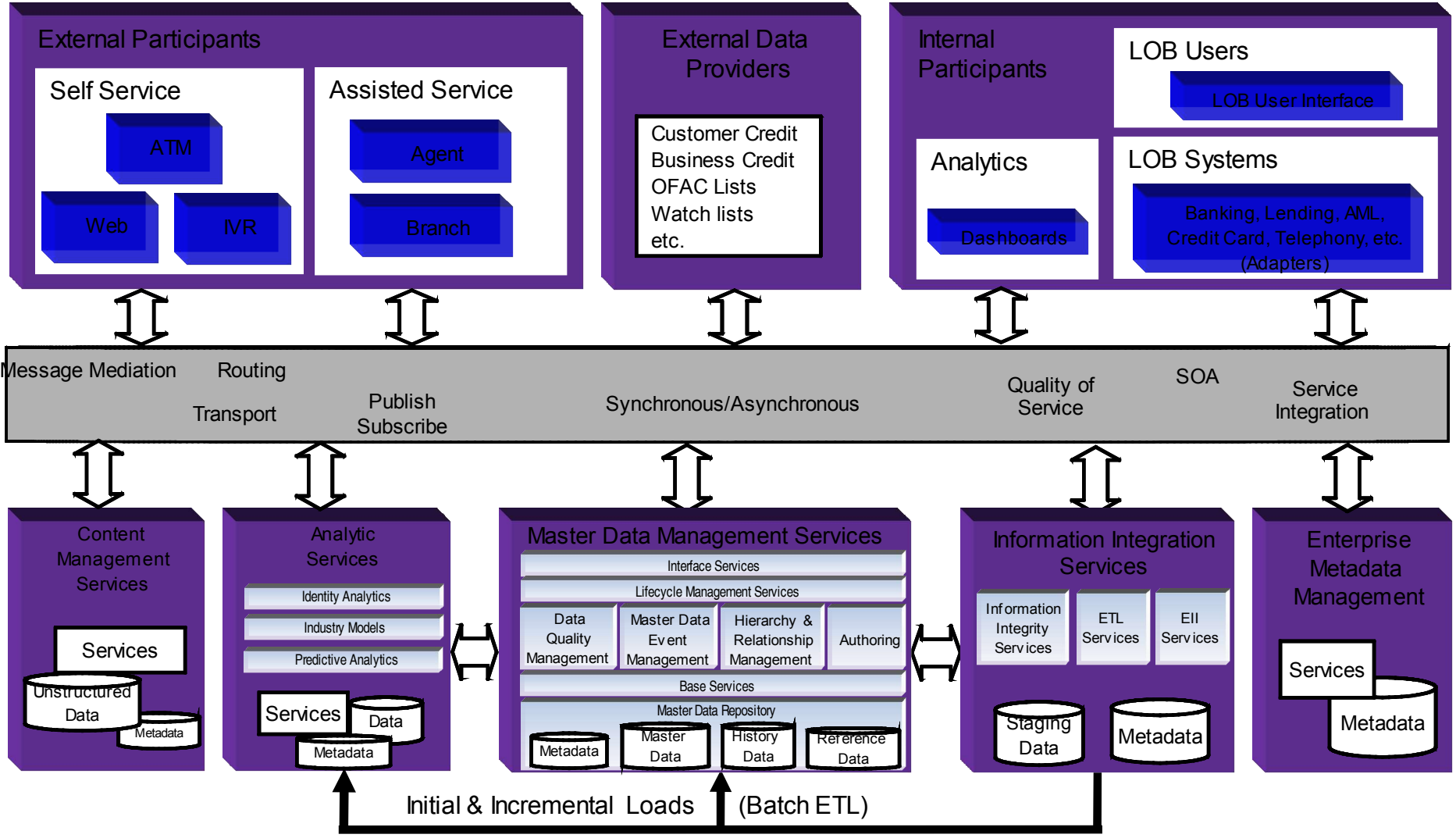
Enterprise Architecture Overview



IT Systems Strategic Direction Characteristics

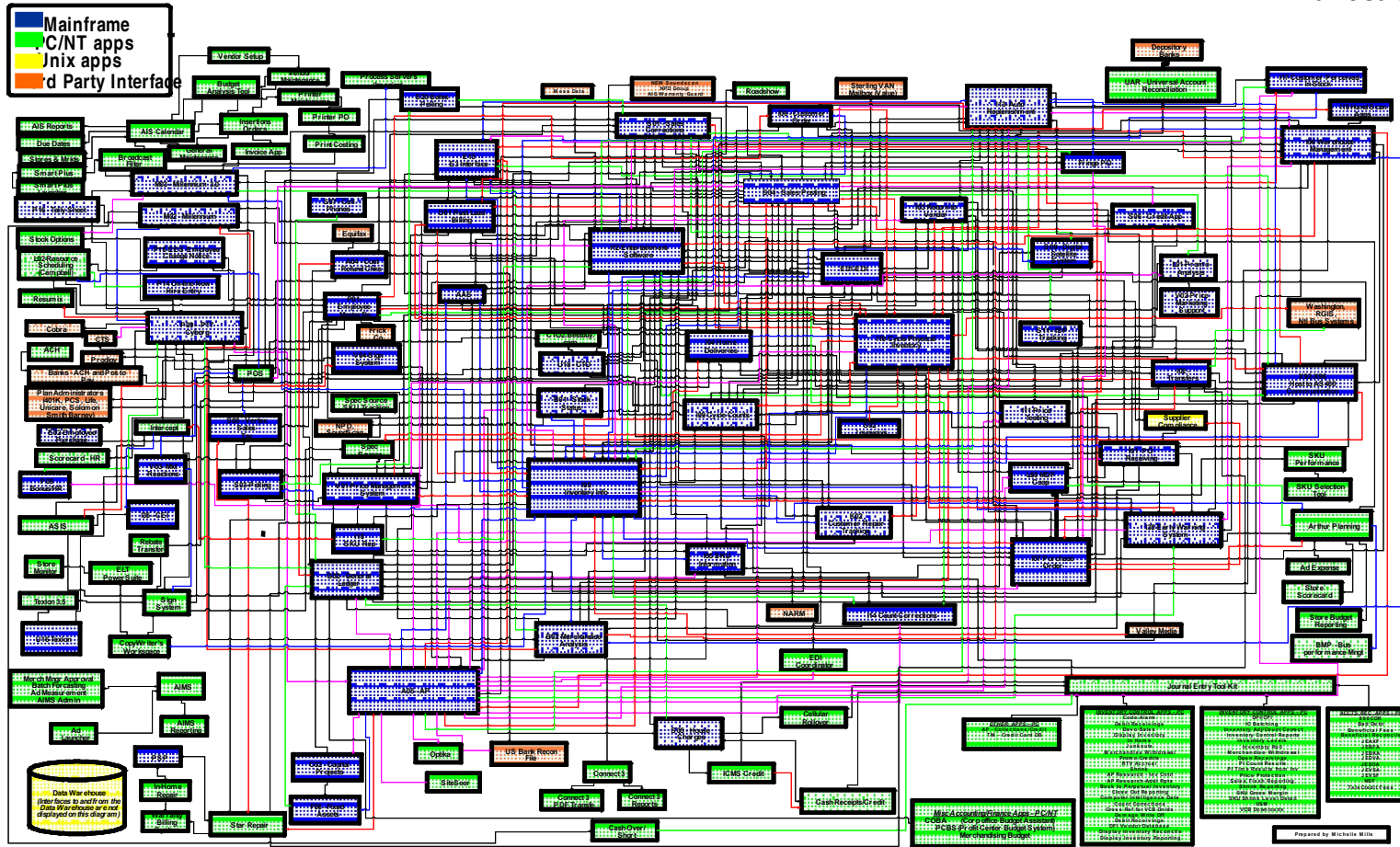
Flexible	Rapid response to business and technological change. Exploit common systems and processes.
Enables Service Excellence	Cost effective, robust, reliable and performant with continuous availability
Enable bank-wide Access	Facilitate access to shared systems, information and data to all users where and when required.
Secure	Protects business assets, secures access systems and data.
Standards	Rationalisation, simplification and efficiency through the use of recognised, enforced standards
Manageable	Management processes and tools embracing all aspects of IT systems
Internal	Internal access to systems
Channel	Access to system from customer facing channels
External	External access to systems from interested parties
Connection and management services	Systems services providing routing and access control to systems
Application services	Workflow, imaging and support for multiple channels to access common applications

Sample bank Architecture



Complexity is Forcing Change in IT ...

Actual Application Architecture for a Midwest Corporation



“About 35 percent of an enterprise’s software budget is spent on maintaining the multitude of point-to-point application links already in place. — Gartner Group

“SOA” Defined: What is?

... a service?

A **repeatable business task** – e.g., check customer credit; open new account

... service orientation?

A way of integrating your **business as linked services** and the outcomes that they bring

... service oriented architecture (SOA)?

An IT **architectural style** that supports service orientation

... a composite application?

A set of **related & integrated** services that support a business process built on an SOA



Convergence in support of SOA

Standards

- *Now:* Broadly adopted Web services ensure well-defined interfaces
- *Before:* Proprietary standards limited interoperability

Organizational Commitment

- *Now:* Business and IT are united behind SOA (63% of projects today are driven by LOB)*
- *Before:* Communication channels & “vocabulary” were not in place

Investment Protection

- *Now:* Tools & methods can leverage existing business application assets, isolating the impact of change
- *Before:* “Rip and replace”

Degree of Focus

- *Now:* SOA services focus on business-level activities & interactions
- *Before:* The focus was on narrow, technical sub-tasks

Connections

- *Now:* SOA services are linked dynamically and flexibly
- *Before:* Service interactions were hard-coded and application dependent

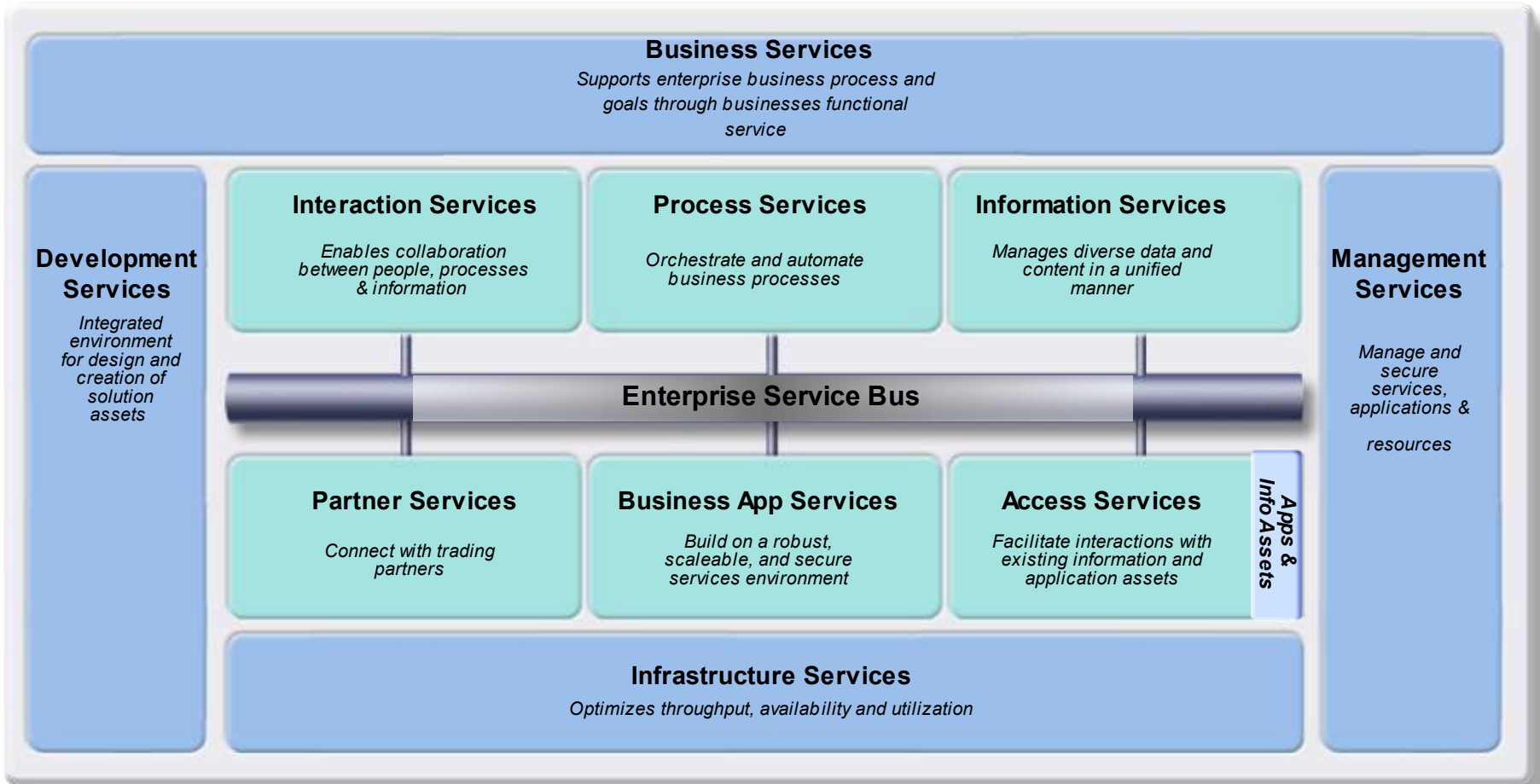
Level of Reuse

- *Now:* SOA services can be extensively re-used to leverage existing IT assets
- *Before:* Any reuse was within application “silos”

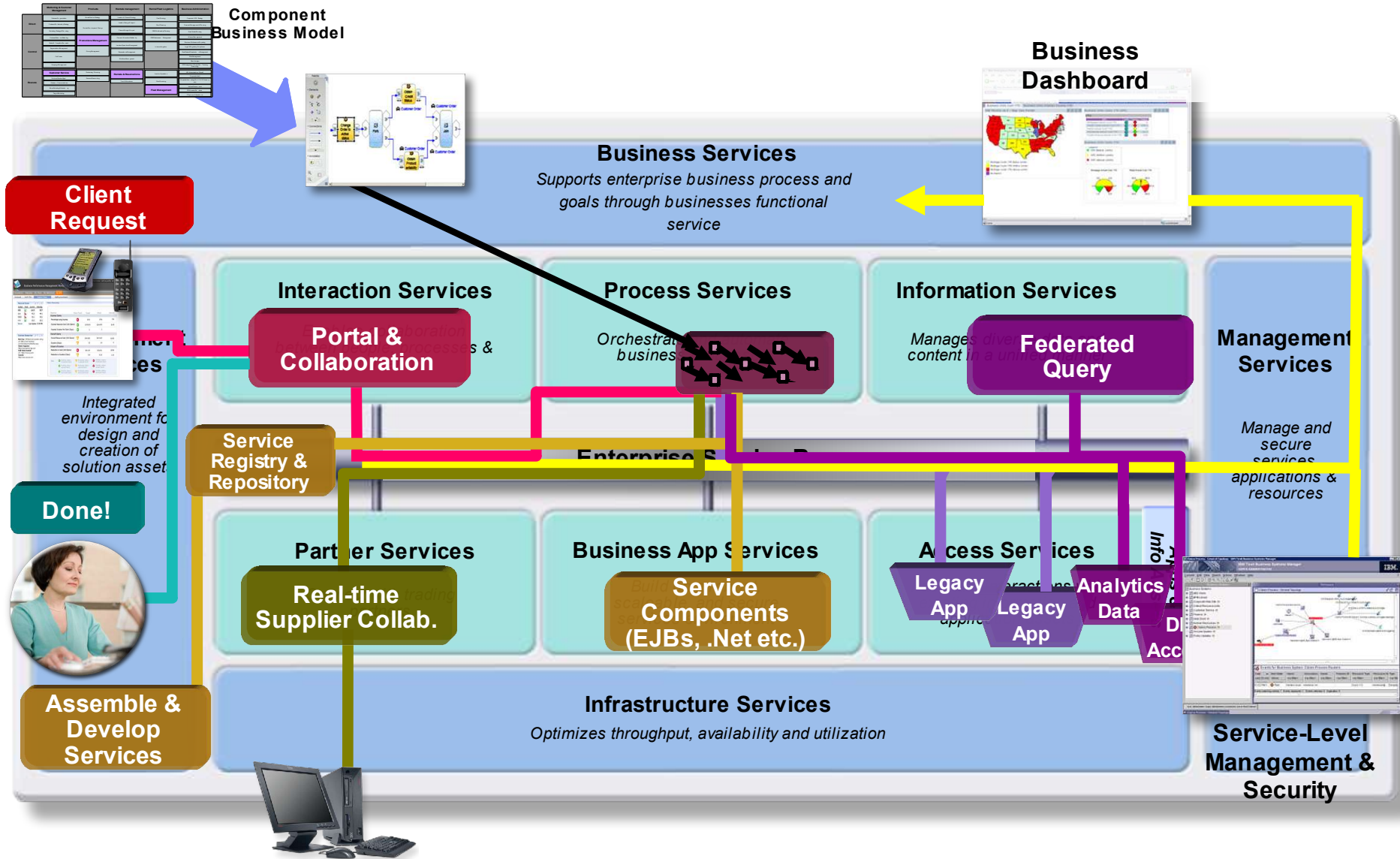
*Source: Cutter Benchmark Survey

SOA Foundation Reference Model

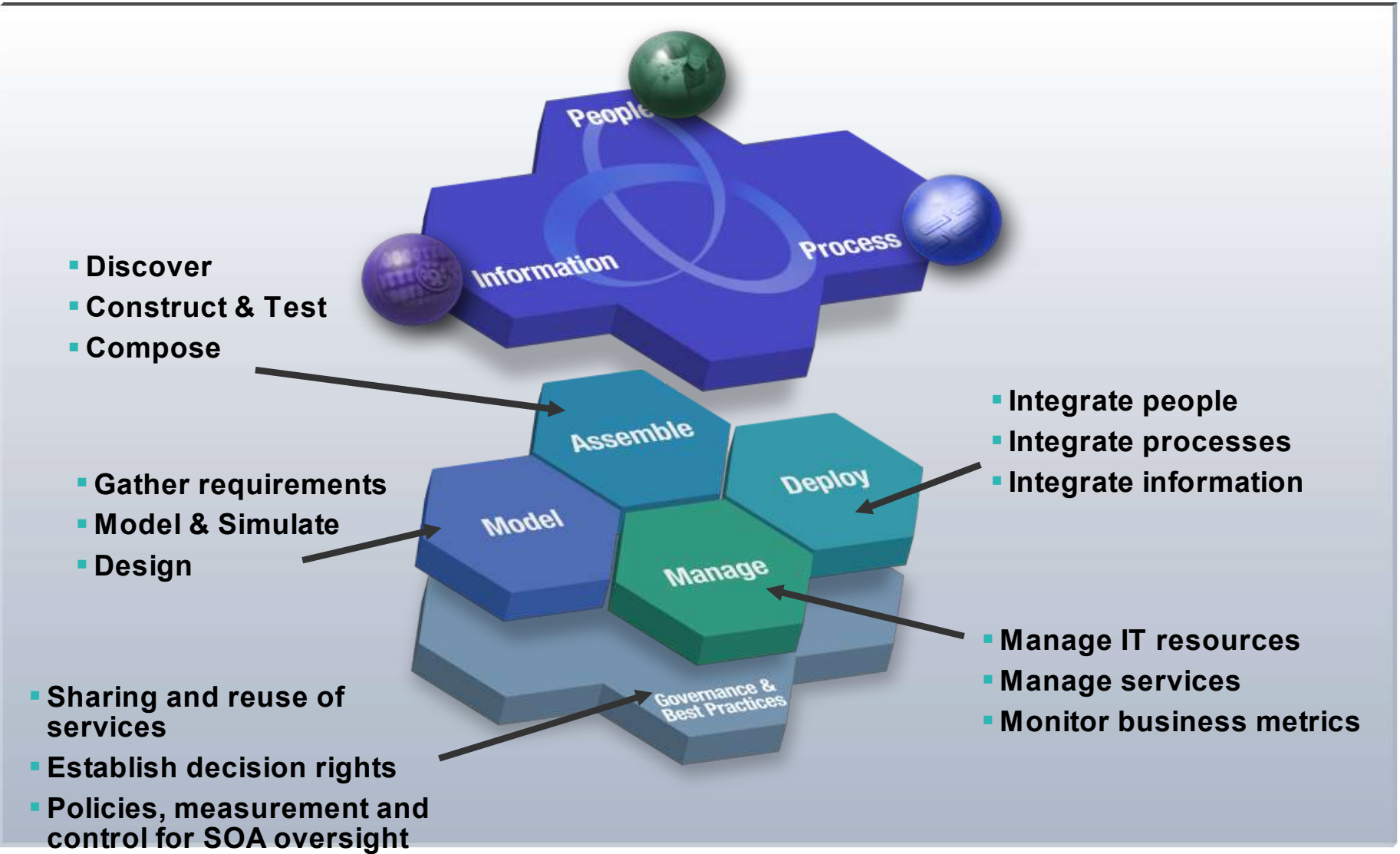
A Foundation for SOA Infrastructure



The SOA Foundation Reference Model in Action



SOA Lifecycle provides a comprehensive approach

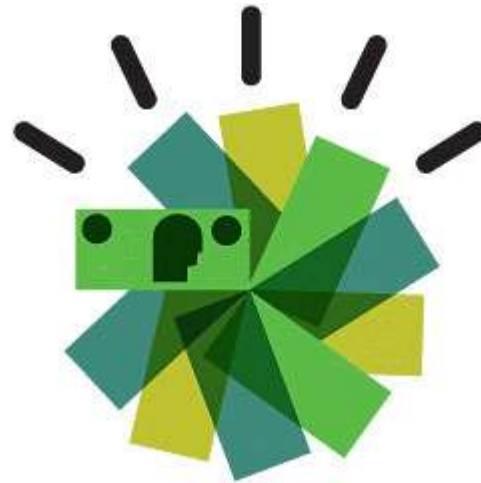


References

<http://www.ibm.com/developerworks/ru/doc/>

"Компас в мире сервис-ориентированной архитектуры (SOA): ценность для бизнеса, планирование и план развития предприятия"

Биберштейн Н., Боуз С., Джонс К., Фиаммант М., Ша Р. (2007 г.)



Thank you